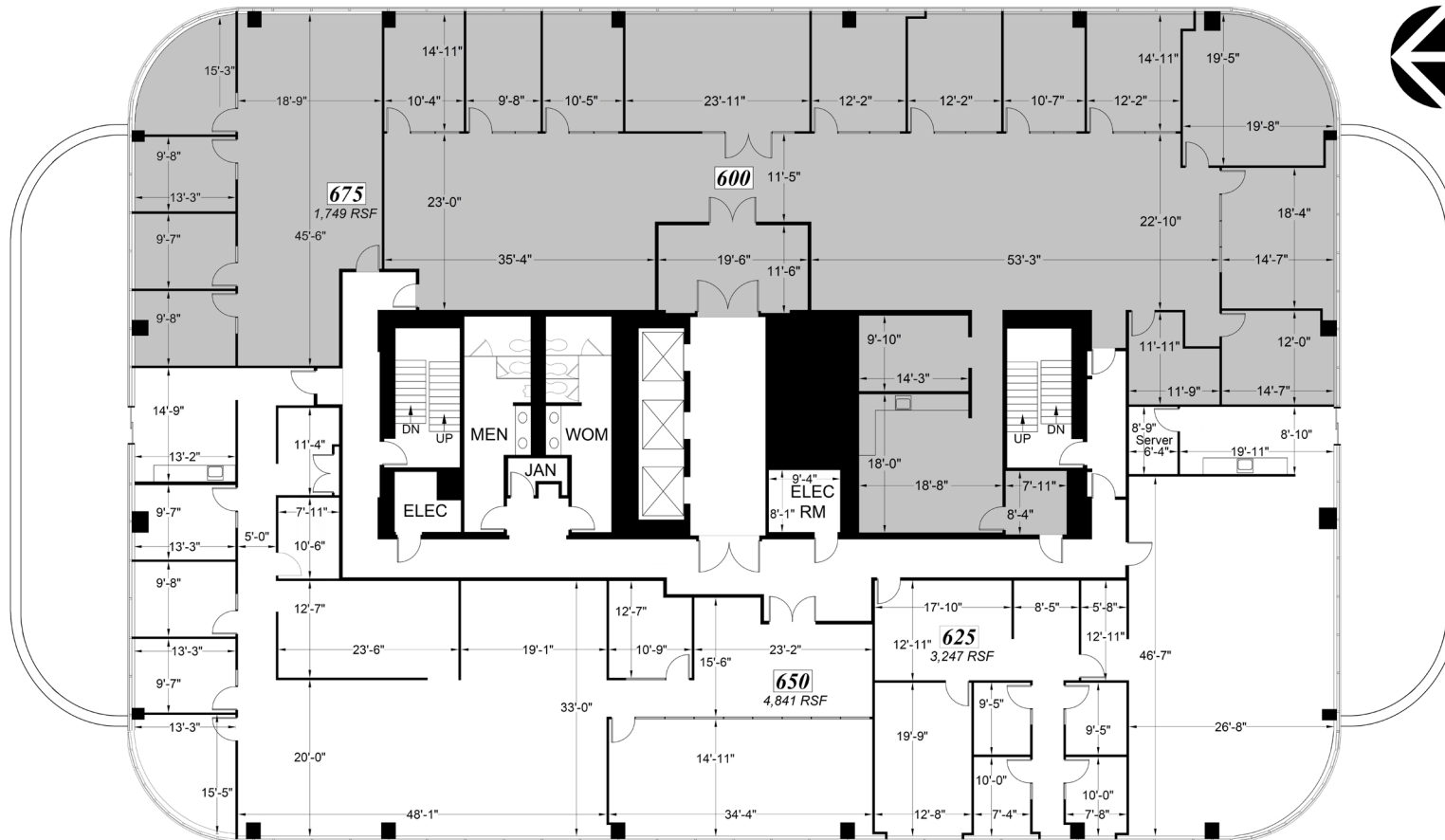


SUITE 625: ±3,247 RSF / SUITE 650: ±4,841 RSF (TOTAL 8,088 RSF)

Plans not to scale



LEASING INFORMATION

Bob Maderious

Senior Vice President

925.357.2010

bob.maderious@transwestern.com

lic 00616136

2175 N. California Blvd, Suite 415

Walnut Creek, CA 94596

CA BROKERAGE LIC 01263636

T 925.357.2000 F 925.357.2001

TRANSWESTERN

REAL ESTATE
SERVICES