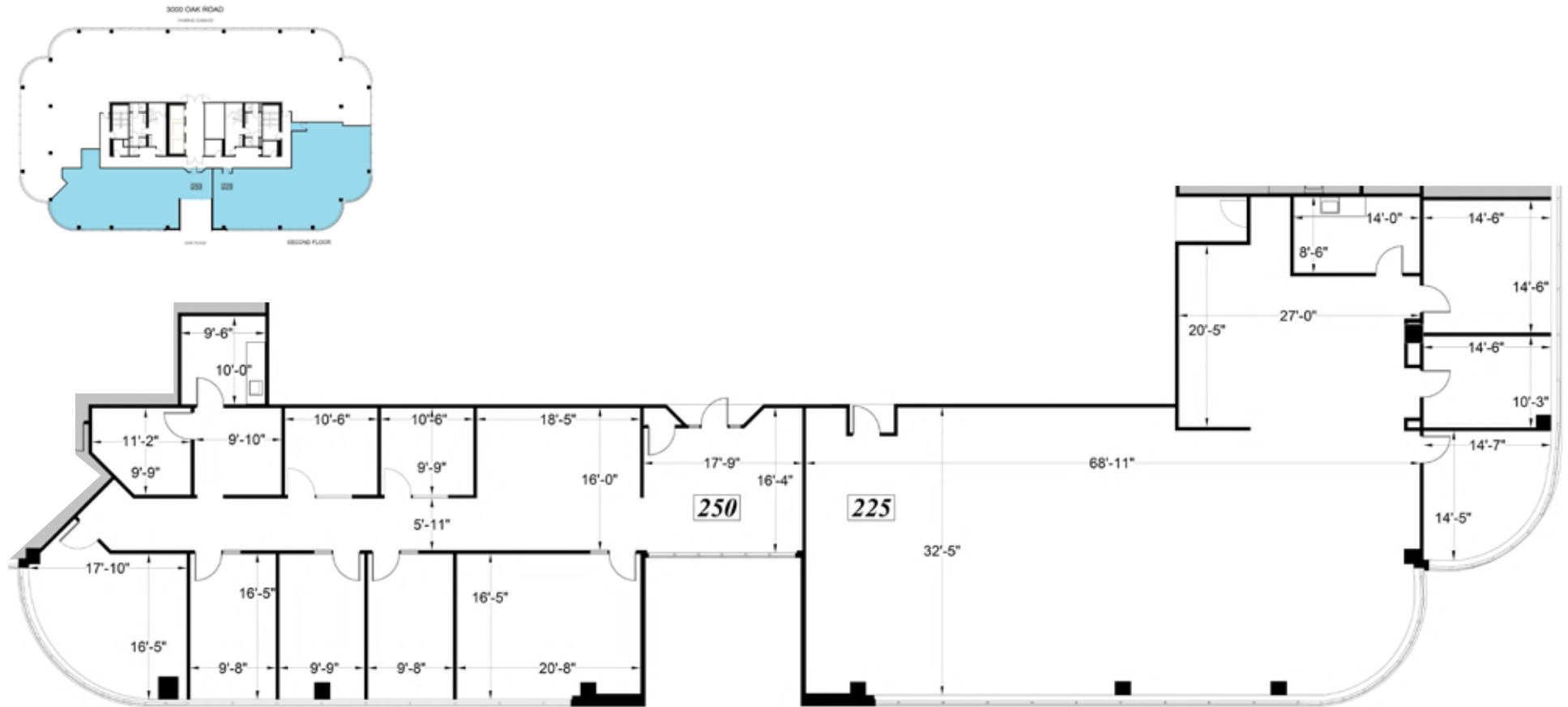


SUITE 225: ±4,424 RSF; SUITE 250: ±3,190 RSF (TOTAL: ±7,614 RSF)

Plans not to scale



LEASING INFORMATION

**Bob Maderious**  
Senior Vice President  
925.357.2010  
[bob.maderious@transwestern.com](mailto:bob.maderious@transwestern.com)  
LIC 00616136

2175 N. California Blvd, Suite 415  
Walnut Creek, CA 94596  
CA BROKERAGE LIC 01263636  
T 925.357.2000 F 925.357.2001

