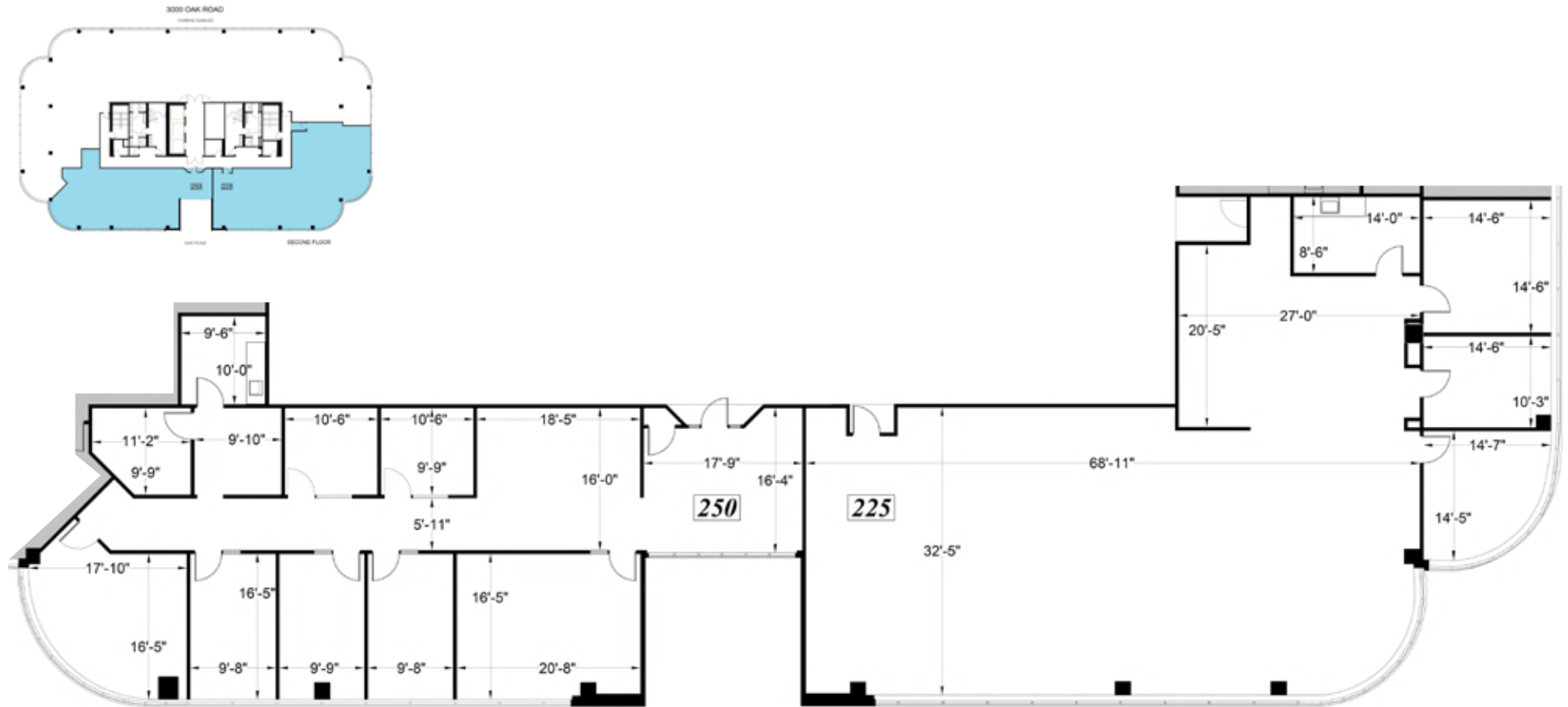


SUITE 225: ±4,424 RSF; SUITE 250: ±3,190 RSF (TOTAL: ±7,614 RSF)

Plans not to scale



LEASING INFORMATION

Bob Maderious
Senior Vice President
925.357.2010
bob.maderious@transwestern.com
LIC 00616136

2175 N. California Blvd, Suite 415
Walnut Creek, CA 94596
CA BROKERAGE LIC 01263636
T 925.357.2000 F 925.357.2001

